

## Market Comment 22.10.2015

Index	Previous	Today	Move pts	Change %
Industrial	131.46	130.94	0.52	0.40
Mining	23.68	23.50	0.18	0.76

**SOURCE: ZSE**

### ZSE eases further on insignificant foreign contribution...

The market saw a further slowdown in today's session as most of the heavies were constrained by either demand or supply while the few active were thinly traded. Volumes were down 72% to 470,846 shares, values dropped 76.85% to \$72,368 and active stocks were unchanged at 18 whilst number of trades was down 14.63% to 35. Minimal foreign participation contributed to the day's depressed activity; buys were a mere \$554.00 and sales \$1,953. Foreign participation was in low value stocks with demand spread in Barclays, RTG, TURNALL and ZIMPAPERS while sales were in EDGARS and Barclays. The day's top volumes were in PADENGA (31.74%), HWANGE (21.24%), FIDELITY (11.68%), FML (6.37%) and BARCLAYS (6.01%) and leading values were in NATFOODS (25.26%), PADENGA (16.48%), BAT (16.38%), OML (9.65%) and FIDELITY (7.22%).

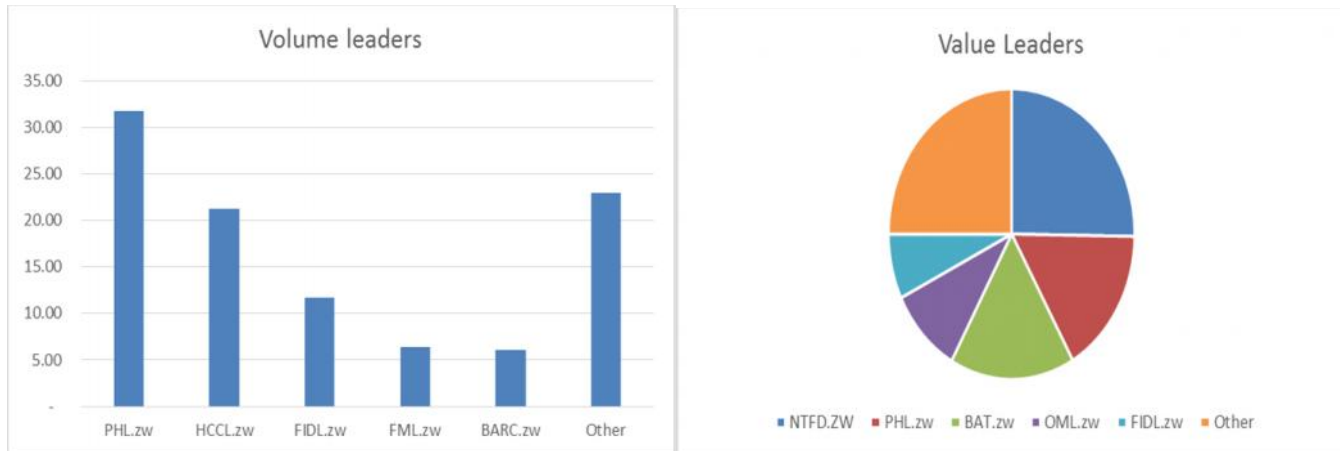
The Industrial Index lost another 0.52pts or 0.40% and closed at 130.94pts on 9 declines against 4 risers and 5 unchanged. Among the fallers was DELTA that gave up 0.04% to \$0.8225, PADENGA down 0.25% to \$0.0798, HIPPO that shed 1.96% to \$0.3750 and NATFOOD that gave up 5.17% to \$2.8433. ZIMPAPERS was the top decliner shaving 20% to \$0.008. Gains were led by insurance related companies FML up 10% to \$0.0220, FIDELITY that rose 5.56% to \$0.0950, OLD MUTUAL that notched 0.76% to \$2.2242. The Mining Index lost a marginal 0.18pts or 0.76% to 23.50pts as coal miners HWANGE dipped 2.86% to \$0.03400 and nickel miners BINDURA shed 0.68% to \$0.0129.

Market Snapshot	Today	Previous	% Change
Market Cap US\$	3,418,654,307	3,432,336,995	0.40
Turnover US\$	72,366	312,639	76.85
Foreign buys US\$	554	255,454	99.78
Foreign sales US\$	1,953	259,648	99.25
No. of trades	35	41	14.63
Volume	470,846	1,681,816	72.00

Gainers	Price	Change	% Change
FML.zw	2.20	0.20	10.00
FIDL.zw	9.50	0.50	5.56
OML.zw	222.42	1.67	0.76

Losers	Price	Change	%Change
ZIMP.zw	0.80	0.20	20.00
RTG.zw	0.70	0.10	12.50
NTFD.zw	284.33	15.51	5.17
HCCL.zw	3.40	0.10	2.86
HIPO.zw	37.50	0.75	1.96

## Volume and value drivers



## Dividend Monitor

<u>Counter</u>	<u>LDR</u>	<u>Rate</u>	<u>Payment Date</u>
NFOOD	09.10.15	4.65c	10.11.15
COLCOM	09.10.15	1.8c	10.11.15
INNSCOR	09.10.15	0.55c	10.11.15

## Upcoming Events

<u>Company</u>	<u>Event</u>	<u>Venue</u>	<u>Time</u>	<u>Date</u>
INNSCOR	EGM	Royal Harare Golf Club, Harare	09.00AM	02.11.15
DELTA	Analyst Briefing	Mandel Training Centre	15.00AM	11.11.15
AFDIS	AGM	St Mannock's Lomagundi Harare	11.00AM	04.11.15
COLCOM	AGM	Colcom Offices 1/3 Coventry Harare	09.00AM	13.11.15
NATFOODS	AGM	Gloria House 10 Sterling road Harare	08.30AM	18.11.15